



# MORPETH PUBLIC SCHOOL

Week 9, Term 4

29th November, 2021

Phone - 4933 6726

email - [morpeth-p.school@det.nsw.edu.au](mailto:morpeth-p.school@det.nsw.edu.au)

## WEBSITE:

[www.morpeth-p.schools.nsw.edu.au](http://www.morpeth-p.schools.nsw.edu.au)

## DATES TO REMEMBER

### Monday 13th December 2021

Presentation Day  
Year 6 Farewell

### Tuesday 14th December 2021

Party Day

### Thursday 16th December 2021

Last day of Term 4 for students

### Tuesday 1st February 2022

First day of Term 1  
Year 1 - 6 Students return

### Tuesday 1st February 2022 -

### Thursday 3rd February 2022

Kinder 2022 - Best Start Interviews

### Friday 4th February 2022

Kinder commence



Before & After School Care

Camp Australia  
Before and After School Care

Please call Cameron  
(Co-Ordinator)

0417 768 636  
and leave a message

## PAYMENT OPTIONS FOR SCHOOL ITEMS:

Cash - to Office

Credit/Debit Card - at Office or via

Parent Online Payments (POP)

Credit/Debit Card via Morpeth Public  
School Website

## Look What's Trending this week!

### Presentation Day Organisation

On Monday of 13 December (Week 11), we will be holding our end of year awards presentations. Obviously, because of COVID considerations, we have been forced to make a number of changes to the format of the assemblies. Regrettably, we are unable to invite parents / carers onto our site to attend the presentations. However, we will be offering a link to a live stream of all events. I apologise for the change, as I appreciate that our families enjoy being present as their child receives their award, but this decision has been made by the Department of Education. If your child will receive an award, at one of our four end of year assemblies, we will inform families and provide a Zoom link to the event.

- Friday 10 December @ 9:30am - Sports Presentation
- Monday 13 December @ 9:30am -Years 3-6 Presentation.
- Monday 13 December @ 10:45am - Leadership Presentation.
- Monday 13 December @ 12pm - Kindergarten -Year 2 Presentation

### School Leadership

Voting, to elect our 2022 school leaders, has been completed. Once again, very little has separated our candidates, which is not surprising considering the quality of students who have nominated for roles. Next Friday (Week 10) we will announce the names of the four students who have been elected to positions, but not the positions that they will hold. At Monday's Week 11 Leadership Assembly, we will officially announce the names of our captains and vice-captains for 2022.

### Kindergarten Orientation

Tomorrow morning we will be welcoming our 2022 Kindergarten students to our school. Having briefly met our new school members and their families during Term 3 meetings, tomorrow the cohort will come together and work in the Kinder rooms with their classmates. Mrs Hanks will put our students through their paces and provide an opportunity for them to experience big school activities. Our new students will also meet their buddies for the first time during tomorrow's orientation.

### P&C AGM

Last Monday our P&C held their 2021 Annual General Meeting. The meeting, held via zoom, resulted in the election of a full executive and the establishment of key sub committees. On behalf of the Morpeth school community, I would like to congratulate Sharyn McLean (President), Jodette Clark (Secretary), Ryan Flanagan (Treasurer), Karen Fitzherbert and Caitlin Burke (Vice-Presidents) who will represent our P&C as elected 2021-2022 executive members. I would also like to thank our previous P&C for their excellent contributions to our school during 2021.

### End of Year—Other Key Dates

As mentioned, our end of year sports assembly (Friday of Week 10) and class and leadership presentations (Monday of Week 11) have been scheduled. In what will be an incredibly hectic final Monday of the term, we will be holding our Year 6 farewell that evening. Party day will be held on the following day, Tuesday 14 December. We envisage that Semester 2 reports will be sent home on party day. As if the week couldn't get any busier, we will also be conducting the final phase of the tender process for our 2022 Out of School Hours (OoSH) service provider and the announcement, via merit selection, of our substantive School Administration Officer. We are also expecting news regarding the commencement of our Admin rebuild.

It's fair to say that the coming weeks will be a tad busy!

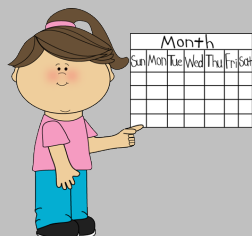
*Peter Edmonds*



DON'T FORGET WHEN ORDERING YOUR LUNCH ORDERS TO USE '[www.QuickCliq.com.au](http://www.QuickCliq.com.au)'



# P & C NEWS



## Christmas Dinner/P&C Meeting -

Monday 6th December 2022 at 7pm.

Miss Mullins Bar, Commercial Hotel Morpeth

If you would like to participate in the meeting, please:  
email [morpethspandc@gmail.com](mailto:morpethspandc@gmail.com)

**ALL WELCOME**

## **UNIFORM SHOP IS NOW ONLINE ONLY**

Uniform orders - PLEASE ORDER ON QUICKCLIQ

For any enquiries please contact: **Bec on 0413 771 181 or email [morpethspandc@gmail.com](mailto:morpethspandc@gmail.com)**  
**BANK ACCOUNT DETAILS FOR ONLINE PAYMENTS - BSB No - 032 639 Account No - 287 512**

## **Canteen News**

**Week 9 - Term 4, 2021**

Tues: 30.11.2021  
Wed: 01.12.2021  
Thurs: 02.12.2021  
Fri: 03.12.2021

**Online orders only using QuickCliq**

**The Canteen will not be open for  
operation during play breaks**



## **PBL**

This week's focus lesson ...

**Fixed Equipment**

**We will be talking with students about ...**

*Wait you turn*

*Use appropriate language*

*Follow Teacher instructions*

*Safe hands and feet*

*Walk on and around fixed equipment*

*Wear a school hat*

*Know how to use equipment safely*



## School Banking update from Commonwealth Bank

For 90 years, our School Banking program has helped children learn about money, reinforced the importance of regular savings and provided structure for parents to support their children to save.

Though the program continues to have strong support from schools, parents and teachers, recent decisions by some state and territory governments because of a review by the corporate regulator mean we are unable to continue providing programs in schools, and we have had to make a difficult decision to close our School Banking program for all government and non-government schools across the country.

Our School Banking program was established in 1931 at a time when having a bank account was not commonplace, and since then we have helped more than 15 million Australians take their first financial steps. This would not have been possible without the wonderful support we have received from schools like yours, including all the parents and volunteers, and for this we are deeply grateful. Thank you.

Even though this is a sad time, School Banking has taught so many young Australians, past and present, the value of money and we believe this should be celebrated. We have created a place for you to share your stories, fondest memories and lessons learnt through the program. To share your story and access our financial education resources, please visit. Even though the CommBank School Banking program will not be returning to your school after this year, you can continue to make deposits into your child's Youthsaver account through online transfers or at any CommBank branch. If you need further information please phone 132 221 or visit your local CommBank branch.

---



# School Travel for 2022



## 2022 school travel applications are now open

Students who need a School Opal card or travel pass for 2022 can [apply](#) now. A new application will need to be submitted if they are applying for a school travel pass for the first time, or if they are requesting an additional travel entitlement as a result of a new shared parental responsibility situation (e.g. joint custody).

Students who change address, school, campus location, or who have repeated a year or received an expiry notification from Transport for NSW for their school travel entitlement should [renew or update](#) their details before **the end of term 4**. This will ensure that schools can endorse applications and current entitlements are updated and remain valid. School Opal card holders will have the changes applied to their existing card.

If a student's distance eligibility has changed based on their grade the system will automatically update their entitlement if they meet the new criteria. If they do not meet the new [eligibility criteria](#), they will receive an expiry notification via email.

Students who have an entitlement approved under a medical condition that is due to expire will receive a notification advising them to re-apply.

[Term Bus Pass](#) holders will receive a notification to re-apply.

Students in the Opal network applying for an Opal card (including a Term Bus Pass) for the first time will receive their Student Opal card at their nominated postal address. Cards will be mailed out from January 2022.

Students living in rural and regional (R&R) areas should receive their travel pass at the start of the new school year from their nominated transport operator. It may come via the school or be sent directly to them at home. **Note:** some R&R operators do not issue travel passes. Students/parents should confirm with their nominated operator if they do not receive a pass.



## School Student Transport Scheme site change

On 1 October 2021 the School Student Transport Scheme (SSTS) information and application portal was moved to [transportnsw.info](https://transportnsw.info). This will assist families to find all their travel information in the one place.

### Travel from Term 1 2022

We ask that parents plan ahead and make sure their child knows which service/s to use and has a valid ticket to travel; either a School Opal card or Child/Youth Opal card (within Greater Sydney) or a School Travel Pass (outside Greater Sydney), from the start of the school year.

Applications for the School Student Transport Scheme (SSTS) open at the start of Term 4 2021 for travel in 2022, so parents/students can [apply](#) or [update](#) details early and be ready for the start of the new school year.

Most students using the Opal network will not need a new Opal card and can continue travelling on their existing card each year.

The start of the year is a difficult period for local bus operators, and students travelling without a valid ticket make service planning and operations increasingly difficult.

We recognise that for some families last minute changes to school enrolments mean they may not have a School Opal card or Travel Pass for the start of term. In the Opal network, we strongly encourage these families to have their children travel on a Child/Youth Opal card until they receive their valid School Opal card. If outside Greater Sydney, parents should contact their [local bus operator](#) to discuss their travel needs.

Bus operators are flexible and understanding, particularly at the start of the school year, and will ensure students can travel safely to and from school. But to best support our operators we encourage all students to have a valid ticket, as early as possible, from the start of the school year.

Please also remember that students using Opal cards must tap on and tap off in line with the [Student code of conduct](#) and [Opal terms of use](#).



Further information can be found at [transportnsw.info/travel-info/using-public-transport/school-travel](https://transportnsw.info/travel-info/using-public-transport/school-travel)

Enquiries can be submitted at [transportnsw.info/contact-us/feedback/passes-concessions-feedback](https://transportnsw.info/contact-us/feedback/passes-concessions-feedback)



# Road safety



## 40km/h school zones

40km/h school zones slow traffic on the roads around schools. This is to help protect children on their way to and from schools at the times and places where they are often in high numbers. Most 40km/h school zones operate between 8.00am and 9.30am and from 2.30pm until 4.00pm. The 40km/h school zone speed limit must be observed even if school children cannot be seen.

A 40km/h school zone operates on all notified school days including staff development days (student-free days). While some schools may operate on different term dates, school zone speed limits must be followed during NSW Government determined school terms.

You can find the school term dates on the following websites:

- [roadsafety.transport.nsw.gov.au](https://roadsafety.transport.nsw.gov.au)
- [educationstandards.nsw.edu.au](https://educationstandards.nsw.edu.au)
- [education.nsw.gov.au](https://education.nsw.gov.au)

To increase motorists' awareness of 40km/h school zones, triangular 'dragon's teeth' road markings indicate that the vehicle is entering a school zone.

Fines and a loss of demerit points will apply if the 40km/h speed limit isn't followed. For more information on fines and demerit points, visit [transport.nsw.gov.au](https://transport.nsw.gov.au)

For more information on keeping our kids safe around schools visit the **families** section on [safetytown.com.au](https://safetytown.com.au)

# Road safety



## Driving safely near school buses

There is a 40km/h speed limit for traffic passing a school bus that is setting down or picking up school children. This speed limit is for all traffic travelling in the same direction as the bus, whether the bus is stationary or moving.

Lights will flash on the front and back of the bus reminding drivers that there may be children crossing or about to cross the road.

Buses can't stop quickly because they are large and heavy vehicles. So, remember:

- Reduce speed to 40km/h when bus lights are flashing
- Give way to buses
- Watch out for children crossing
- Never park in or near a bus stop or bus zone.

### Informal school bus stops

Informal bus stops are not sign posted and are usually found in rural areas. They may be at the front of a property, or on the side of the road, which may make children difficult to see.

For more information on keeping our kids safe around schools visit the **families** section on [safetytown.com.au](https://www.safetytown.com.au)



## Club Sessions 2 years to 12 years.

	Monday	Tuesday	Wednesday	Thursday	Friday
Week Beginning 20/12/2021	1.30—2.30 2.30—3.30 Archery \$10				PH
Week Beginning 3/1/2022	PH			9.15 - 10.00 10.15 - 11.00 am KG Trial \$13 6.00—8.00 pm Adult Gym \$16	12.00 - 1.00 1.00 - 2.00 2.00 - 3.00 GymStar Trials \$14
Week Beginning 10/1/2022	1.30—2.30 2.30—3.30 Archery \$10			9.15 - 10.00 10.15 - 11.00am KG Trial \$13 6.00—8.00 pm Adult Gym \$16	12.00 - 1.00 1.00 - 2.00 2.00 - 3.00 GymStar Trials \$14
Week Beginning 17/1/2022				9.15 - 10.00 10.15 - 11.00am KG Trial \$13 6.00—8.00 pm Adult Gym \$16	12.00 - 1.00 1.00 - 2.00 2.00 - 3.00 GymStar Trials \$14
Week Beginning 24/1/2022				9.15 - 10.00 10.15 - 11.00am KG Trial \$13 6.00—8.00 pm Adult Gym \$16	12.00 - 1.00 1.00 - 2.00 2.00 - 3.00 GymStar Trials \$14

**Competitive Training Monday, Wednesday & Friday 9.00—12.00  
starting 5th January 2022**

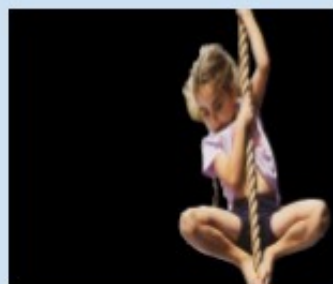


"A Charity empowering young people through Police and Community Partnerships"

3 James Street Maitland. 2320 P) 49347122  
e) [maitland@pcycnsw.org.au](mailto:maitland@pcycnsw.org.au) w) [www.pcycnsw.org.au/maitland/](http://www.pcycnsw.org.au/maitland/)







**Ready, Set, GO!**

**Summer School Holidays 2021**

**Phone 4934 7122 to Book!**

**Half Day \$30 & Full Day \$50 sessions 5 to 12 years.**

**Timetable at <https://www.pcycnsw.org.au/maitland/school-holidays>**

	Monday	Tuesday	Wednesday	Thursday	Friday
Week Beginning 20/12/2021	9.00—12.00 Gymnastics	9.00—12.00 Tumbling & Tricks	9.00—12.00 Gymnastics 12.00—3.00 Multi Sport		PH
Week Beginning 3/1/2022	PH	9.00—12.00 Tumbling & Tricks 12.00—3.00 Trampolining	9.00—12.00 Gymnastics 12.00—3.00 FREE G / Tramp	12.00—3.00 Trampolining	9.00—12.00 Gymnastics
Week Beginning 10/1/2022	9.00—12.00 Gymnastics 12.00—3.00 Tumbling & Tricks	9.00—12.00 Tumbling & Tricks 12.00—3.00 FREE G	9.00—12.00 Gymnastics 12.00—3.00 FREE G / Tramp	12.00—3.00 Trampolining 1.00-4.00 Fencing	9.00—12.00 Gymnastics
Week Beginning 17/1/2022	9.00—12.00 Gymnastics 12.00—3.00 Tumbling & Tricks	9.00—12.00 Tumbling & Tricks 12.00—3.00 FREE G	9.00—12.00 Gymnastics 12.00—3.00 FREE G / Tramp	12.00—3.00 Trampolining	9.00—12.00 Tumbling & Tricks
Week Beginning 24/1/2022	9.00—12.00 Gymnastics 12.00—3.00 Tumbling & Tricks	9.00—12.00 Tumbling & Tricks 12.00—3.00 FREE G	PH	12.00—3.00 Trampolining	9.00—12.00 Tumbling & Tricks



"A Charity empowering young people through Police and Community Partnerships"

3 James Street Maitland. 2320 P) 49347122  
e) [maitland@pcycnsw.org.au](mailto:maitland@pcycnsw.org.au) w) [www.pcycnsw.org.au/maitland/school-holidays](http://www.pcycnsw.org.au/maitland/school-holidays)



## PCYC MAITLAND VACATION CARE PROGRAM

### Week One

**MONDAY  
13TH DEC**

Last days of school.

I hope you are ready for a fun filled Vacation Care period...!!



**TUESDAY  
14TH DEC**

Have you thought of what you want for XMAS yet...?  
Get thinking, and we can write letters to Santa...!



**WEDNESDAY  
15TH DEC**

Nearly the end of Term 4



**THURSDAY  
16TH DEC**

Last day of school ...!!!



**FRIDAY  
17TH DEC**

**\$60**

OUTDOOR SPORT GAMES

TODAY LETS VENTURE OUTSIDE AND PLAY A FEW GAMES.. WE HAVE A WIDE RANGE OF GAMES TO PLAY INDIVIDUALLY OR IN TEAMS.

THIS AFTERNOON WE CAN ENJOY FROZEN YOGHURT TREATS WE MADE EARLIER,



Contact:  
maitlandoosh@pcycnsw.org.au  
or  
0491053196

PCYC POLICE CITIZENS YOUTH CLUB NSW  
OUT OF SCHOOL HOURS

- Excursion
- Special Event
- In Service Event

## PCYC MAITLAND VACATION CARE PROGRAM

### Week five

**MONDAY  
24TH JAN**

**\$65**

INDIAN CULTURE DAY

We will listen to music from India, draw and colour mandala art and enjoy a feast of Butter Chicken and Rice.

In the afternoon we will enjoy a session of gymnastics or parkour with Chey or Zayne

\*Don't forget to let me know of any allergies.



**TUESDAY  
25TH JAN**

**\$65**

AUSTRALIA DAY FESTIVITIES

Today we are going to have a day of craft. We will create some True Blue craft just in time for Australia Day For lunch we will enjoy a BBQ lunch of sausage sangas with onion and sauce of your choice.

\*Don't forget to let me know of any allergies



**WEDNESDAY  
26TH JAN**

AUSTRALIA DAY HOLIDAY SEE YOU TOMORROW ...!!



**THURSDAY  
27TH JAN**

**\$80**

ROCKPOOL ADVENTURES ACTIVITY

Today, after being cancelled twice because of COVID, we get to experience hands on what Rockpool Creatures there are and how we can help to look after them.

This afternoon we will compete in a Ready, Steady Cook scenario with our friends from Newcastle



**FRIDAY  
28TH JAN**

**\$80**

MAITLAND ART GALLERY VISIT

Today we are going to the art gallery across the road. There are some interaction activities we can join in on and creative activities we can do also.

When we get back to the club we will do a Scavenger hunt and relax with fruit rockets and yoghurt for afternoon tea



Contact:  
maitlandoosh@pcycnsw.org.au  
or  
0491053196

PCYC POLICE CITIZENS YOUTH CLUB NSW  
OUT OF SCHOOL HOURS

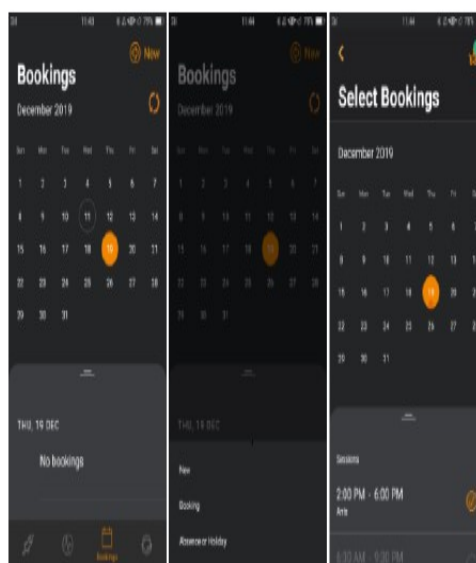
- Excursion
- Special Event
- In Service Event



# HOW TO BOOK ONLINE

CLICK ON THE BOOKINGS TAB. CLICK ON THE RELEVANT DAY ON THE CALENDAR. IF THERE ARE NO EXISTING SESSIONS, 'NO BOOKINGS' WILL DISPLAY AT THE BOTTOM OF THE SCREEN. A SESSION WILL NEED TO BE BOOKED FOR THIS DAY.

TO ADD A BOOKING, CLICK '(+) NEW' IN THE TOP RIGHT HAND CORNER AND SELECT 'BOOKING' IN THE POP UP. AVAILABLE SESSIONS WILL BE VIEWABLE FOR THAT DAY. SELECT THE ROOM AND TIME YOU WISH TO BOOK.



NOTE: FOR MULTIPLE BOOKINGS, REPEAT THE PROCESS ABOVE UNTIL ALL THE SESSIONS ARE SELECTED. AT THIS TIME, YOU CAN ONLY ADD BOOKINGS BUT NOT DELETE THEM. YOU WILL HAVE TO CONTACT THE CHILDCARE CENTRE TO DELETE THIS FOR YOU IF NEEDED.

ONCE SELECTED, CLICK THE PRAM ICON IN THE TOP RIGHT HAND CORNER TO MOVE TO THE SUMMARY SCREEN.

THE SUMMARY SCREEN WILL DISPLAY THE NAME OF THE CHILD, THE SESSIONS BEING BOOKED AT THEIR PRICE, TIME AND ROOM. IF THESE ARE INCORRECT, CLICK THE BACK ARROW TO CORRECT SELECTIONS. ONCE HAPPY WITH THE SELECTIONS, CLICK 'REQUEST'.

IF THE SESSIONS HAVE BEEN BOOKED SUCCESSFULLY, THE NEXT SCREEN WILL SHOW A 'CONFIRMED' STATUS FOR THE BOOKING.